

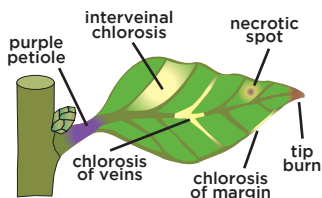
FloraMaX



Ca-Mg-Fe

Cal-Mag-Iron (plus Cu-Mn-Zn-Mo-B-N) Additive

- **Contains Cal-Mag PLUS iron, copper, manganese, zinc, molybdenum, boron and nitrogen** — This is necessary because common deficiencies are caused by 1 of these 9 elements, never just Cal-Mag
- **Helps prevent leaf yellowing, leaf curl, stunted growth, withered fruit-set and bud rot**
- **The trace elements in Ca-Mg-Fe are made from alkaline-resistant compounds that can cope with pH levels up to 10** — Alternative trace element species however become unstable at much lower pH's, which is why trace element deficiencies are so common
- **100% compatible with all liquid or powdered base nutrients**
- Dosage: 1-2ml/L (4-8ml/Gal) during veg and flower.
- Available in: 1L // 5L // 20L // 1000L



FloraMax Ca-Mg-Fe fights common nutrient deficiency symptoms

TESTIMONIALS

“Without Ca-Mg-Fe the growth would stall and there were all types of foliar issues like twisting and dead spots. Now our plants are fully lush all the way through!”

“With our hard water we were regularly having problems... The Ca-Mg-Fe has really helped to keep our plants strong with consistent weight and crop speed”

”

THE CHEMISTS Since 1966

www.floramax.com

 @floramaxnutrients