

Automated Stock Reservoir System: Based on auto-doser ranging from 0.9 - 1.5%

COMPATABILITY : Hydro / Coco / Soil / Outdoor / LED / HID

The Ultimate Solution for Twin Stock Reservoir Systems

These systems normally store a stock solution of "A" and "B" salts with no capacity for organics. This sacrifices yield quality. FloraMax ProPowders™ however, accommodate for organics by having additives that combine together as highly stable stock solutions:

- ✔ Stock solutions are stable for over 3 months and are suitable for drippers
- ✔ Provide healthier roots and foliage, earlier bud onset and more stacking
- ✔ Produce better bag appeal, flavor and potency

Stock Reservoir A
(100-Fold Concentration)

Stock Reservoir B
(100-Fold Concentration)

*Alternatively, use FloraMax System Maintenance at 2ml/L.

/Litre (1Gal = 3.78L)		Veg-1™	Flowering Enhancer	System Cleaner*	Doser	EC	Root-XS™	OrganaBud™	Resin-XS™	System Cleaner*	Doser	EC	Gross EC Res. A + B
--------------------------	--	--------	--------------------	-----------------	-------	----	----------	------------	-----------	-----------------	-------	----	------------------------

VEG	WEEK 1	130g		0.4ml	0.9%	1.3mS	10g	10g		0.4ml	1.0%	0.3mS	1.6mS
	WEEK 2+	130g		0.4ml	1.0%	1.5mS	10g	10g		0.4ml	1.0%	0.3mS	1.8mS
BLOOM	WEEK 1-3	130g	40g	0.4ml	0.9%	1.7mS		10g	20g	0.4ml	1.0–1.5%	0.4–0.6mS	2.1–2.3mS
	WEEK 4+	130g	40g	0.4ml	1.0%	1.9mS		10g	20g	0.4ml	1.0–1.5%	0.4–0.6mS	2.3–2.5mS

VERSION 1 DEC 2025: THIS DOSE CHART SERVES AS A GUIDE ONLY. NO RESPONSIBILITY FOR ANY ERRORS OR OMISSIONS IS ACCEPTED.

FloraMax Products

BASE NUTRIENT



Veg-1™

1-PART UNIVERSAL BASE NUTRIENT

1. ONE formula for Veg & Bloom 2. Fewer deficiencies & extremely clean 3. Suitable for hydro, coco, & soil

CORE ADDITIVE



Root-XS™

ORGANIC ROOT ACCELERANT

1. Accelerates root development & reduces stall 2. Will NOT cause biofilms

CORE ADDITIVE



Flowering Enhancer

PK + CAL-MAG-IRON + PH STABILIZER

3-in-1 Flowering Additive: 1. Promotes bud swell 2. Prevents deficiencies 3. Assists to keep pH below 6.5

OTHER ADDITIVE



Growth-XS™

ORGANIC VEG ACCELERANT

1. Reduces veg phase duration by 25% 2. Enables an extra crop each year 3. Will NOT cause stretch or biofilms

CORE ADDITIVE



Resin-XS™

ORGANIC RESIN ENHANCER

1. Increases frosting, resin, density & mass 2. Replaces bloom boosters & 'finishers' 3. Will NOT cause biofilms

CORE ADDITIVE



OrganaBud™

ORGANIC ENHANCER FOR PLANT STRUCTURE & FRUIT QUALITY

1. Promotes branching, stacking & terps 2. Will NOT cause biofilms

OTHER ADDITIVE



Pythoff PLUS

ELIMINATES TOXIC BUIDUP

1. Prevents root browning, pests & blockages 2. Treats nutrient solutions, flush water & stored water

OTHER ADDITIVE



System Cleaner

ORGANIC PREVENTATIVE FOR BIOFILMS

1. Prevents biofilms to ensure clean drippers & lines 2. Fully compatible with organics & beneficial bacteria

**Replaces System Maintenance*

ProPowders™ vs AB POWDERS

- ✔ Contains both mineral nutrients and 'extracted' organics
- ✔ Dissolves within minutes, even in cold or hard water
- ✔ Ideal for auto-dosers - stock is stable for 6 months plus
- ✔ Healthier roots and foliage and thicker stems
- ✔ Faster bud onset plus more bud sites and stacking
- ✔ Better bag appeal, flavor and potency



ProPowders™ vs LIQUID NUTRIENTS

- ✔ ProPowders™ can be mixed together as a "dry pre-mix", then stored until required. This simplifies dosing. It also reduces human error and recipe theft when performed by trusted staff.
- ✔ 5x more compact and 7x lighter
- ✔ Dropships by air within 7-days, world-wide
- ✔ Produces minimal waste packaging



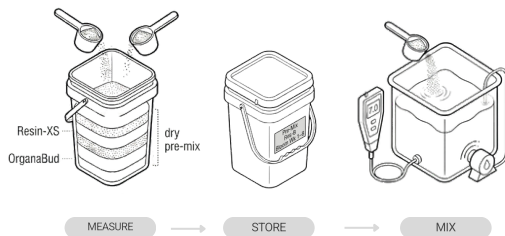
Dosing Options

Dry powders can be added directly to the reservoir, either individually or as a dry pre-mix.

- ✔ Dissolves within minutes
- ✔ Dissolves in cold or hard water

Why use a dry pre-mix?

- ✔ Can be prepared in advance, then stored
- ✔ If made by trusted staff, the risk of human dosing error and recipe theft is reduced



100% Soluble

ProPowder™ stock solutions will dissolve in cold or hard water within minutes. High solubility reduces blockages, clean-up and the need for warm RO water. Stock is stable for at least 6 months, which is ideal for auto-dosers and drippers.



Dose Chart **Stock Reservoir Guidelines & Directions**

GENERAL OPERATIONS & SETUP

Stock Reservoirs

General Instructions

Ensure the auto-dosers can operate between the range of 0.9 and 1.5%. To produce stock solutions at 100-fold concentration, fill reservoir A and B to about 90% full, then add each product followed by the remaining water. Stir thoroughly or employ a mixing pump. NEVER add silica products, peroxide, chlorine, ozone or UV. pH adjustment for each reservoir is typically not required with uncontaminated waters with EC below 1.0mS (550ppm). Reservoir A should typically be pH 2.7–3.3 and Reservoir B, pH 5.5–7.5. CAUTION: Before making batch, ensure reservoir is sterile. Use clear and fresh (sterile) make-up water. If unsure, treat water with Pythoff PLUS (0.5ml/L), then store in the dark for at least 24 hours prior to use. Keep stock reservoirs covered to avoid light ingress, but ensure the head space is well ventilated. Periodically drain then bleach reservoirs (as required).

Dry Pre-Mix

FloraMax ProPowders™ can be combined as a dry pre-mix. For example, for Reservoir A in Bloom, the dose for Veg-1 and Flowering Enhancer can be combined together prior to adding to the reservoir. This can be stored prior to use but ensure the container is air-tight and stored away from direct sunlight, preferably below 25°C (77°F).

Auto-Flowering Plants

After week-2 of the Vegetative phase, switch straight to Bloom week-1 schedule.

Caring for Mother Plants

Follow Vegetative week-2 schedule.

Resin & Oil Production

For improved results, increase Reservoir B doser to 1.5% throughout bloom.

ENVIRONMENTAL ADJUSTMENTS

Final pH

pH of the combined diluted output from Reservoir A + B should be between 5.0 and 6.5. To maintain this, employ an auto pH doser.

CO₂ Injection

(Above 800 ppm)

Increase doser on Reservoir A to approx 1.3%, or increase Veg-1 rate by 40g/L.

Using High Light Intensity

(PPFD above 1,200)

Increase doser on Reservoir A to approx 1.3%, or increase Veg-1 rate by 40g/L. Also, add 1:1 ratio of CO₂ e.g. 1,400 PPFD requires 1,400ppm CO₂.

MAINTENANCE & TROUBLESHOOTING

Root Zone Care & Flushing

For rootzone maintenance, add Pythoff PLUS to a dedicated, 3rd stock reservoir at 50ml/L and set doser to 1.0%. Ensure this reservoir is covered to prevent light ingress and replenished monthly.

If required, flush root-zone with plain water every 7–14 days. Include 0.5ml/L Pythoff PLUS and ensure pH 5.0 - 6.0.

Preventing Reservoir Buildup

Avoid running air stones or mixing pumps for more than 1 hour/day. To prevent light ingress and mold, cover reservoir with a 'raised' lid. Ensure FloraMax System Cleaner (or System Maintenance) is being used.

Fixing Nutrient Deficiencies

Increase Veg-1 by 20–40g/L or Reservoir A doser by 0.15–0.3%. Feed more often and ensure 10-15% run-off.

Maintaining Stored Water

(eg. RO or Rainwater)

Treat weekly with 0.5ml/L Pythoff PLUS.

Preventing Foliage Burn

Feed until 10-15% run-off. Feed and flush more regularly.